

# SHOCK ABSORBER

SMONTA-AMMORTIZZATORI | SHOCK ABSORBER DISMANTLING MACHINE

Cod.PSA

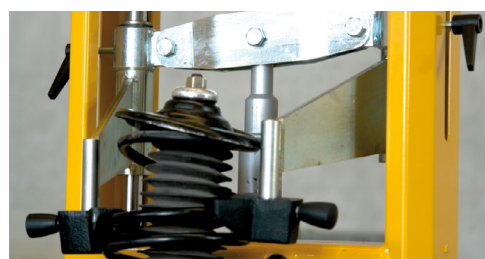
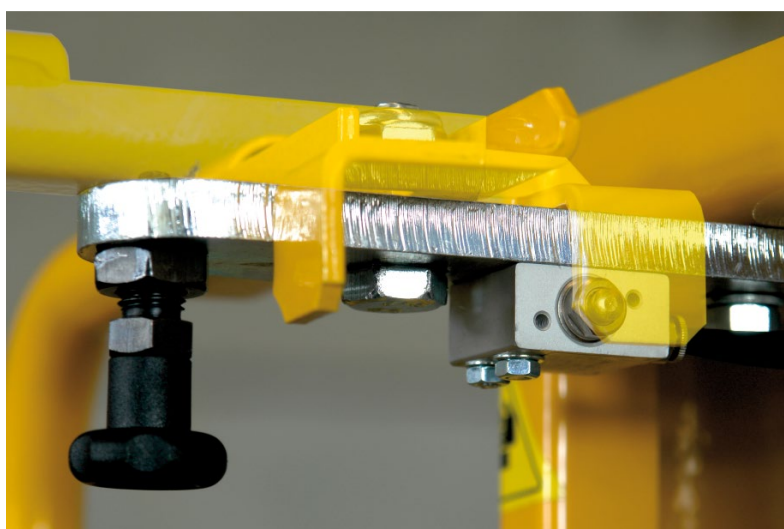
## CARATTERISTICHE TECNICHE

Potenza: 40KN  
 Peso totale: kg 65  
 Dimensioni: (LxPxH) 450x470x1390 mm

## TECHNICAL FEATURES

Pressing power: 40KN  
 Total weight: kg 65  
 Dimensions: (LxPxH) 1390x450x470 mm

 DIMENSIONE IMBALLO  
 500 X 550 X 145 mm



SICUREZZA / SAFETY